

7.–8. nóvember í Hörpu

**Stjórnun
fiskveiða**

– svo miklu meira en kvóti



Þróun nýrra umbúða Flutningur á laxi í kerum

Bragi Smith

bragi.smith@itub.is



HAMPIÐJAN



HÁSKÓLINN Í REYKJAVÍK
REYKJAVÍK UNIVERSITY

ICELANDAIR
CARGO

ISI ICELAND
SEAFOOD



marel

Pipar TBWA



SJÁVARÚTVEGS
RÁÐSTEFNAN

2024

Laxeldi í Evrópu



Noregur
1.60



Skotland
215,000



Færeyjar
106,000

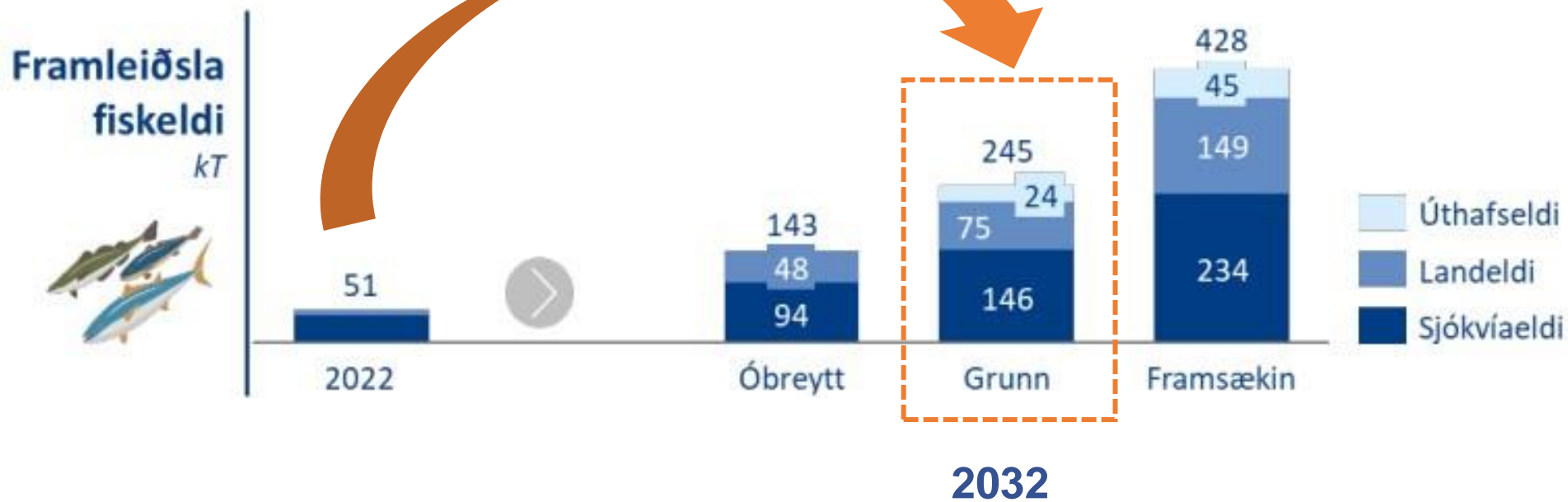


Ísland
50,000

2 milljónir tonna á ári



Aukning framundan



Hvernig eru 2 milljónir tonna fluttar?

86,956,522 kassar á ári



Year 1	87 million
Year 2	174 million
Year 3	261 million
Year 4	347 million
Year 5	434 million
Year 6	521 million

Önnur leið?

Tvíburakerið



Hvernig er þetta gert í dag?

FRAMLEIÐANDI

HOG



23 kg EPS



VINNSLA

VAP



VIÐSKIPTAVINIR



5-7 kg EPS



Hringrásar flutningur

FRAMLEIÐANDI



VINNSLA

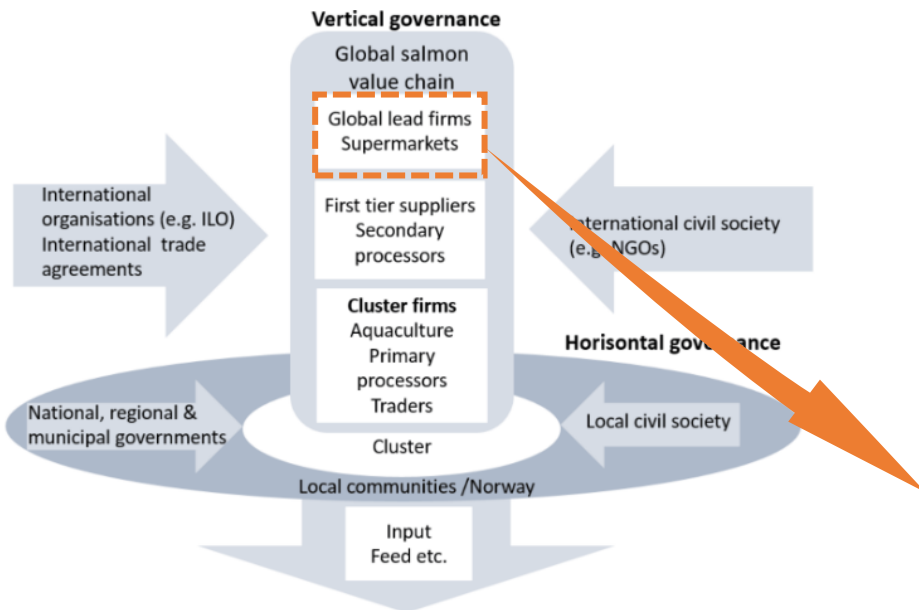


Hvað þarf mikið plast til að flytja 200,000 tonn af laxi

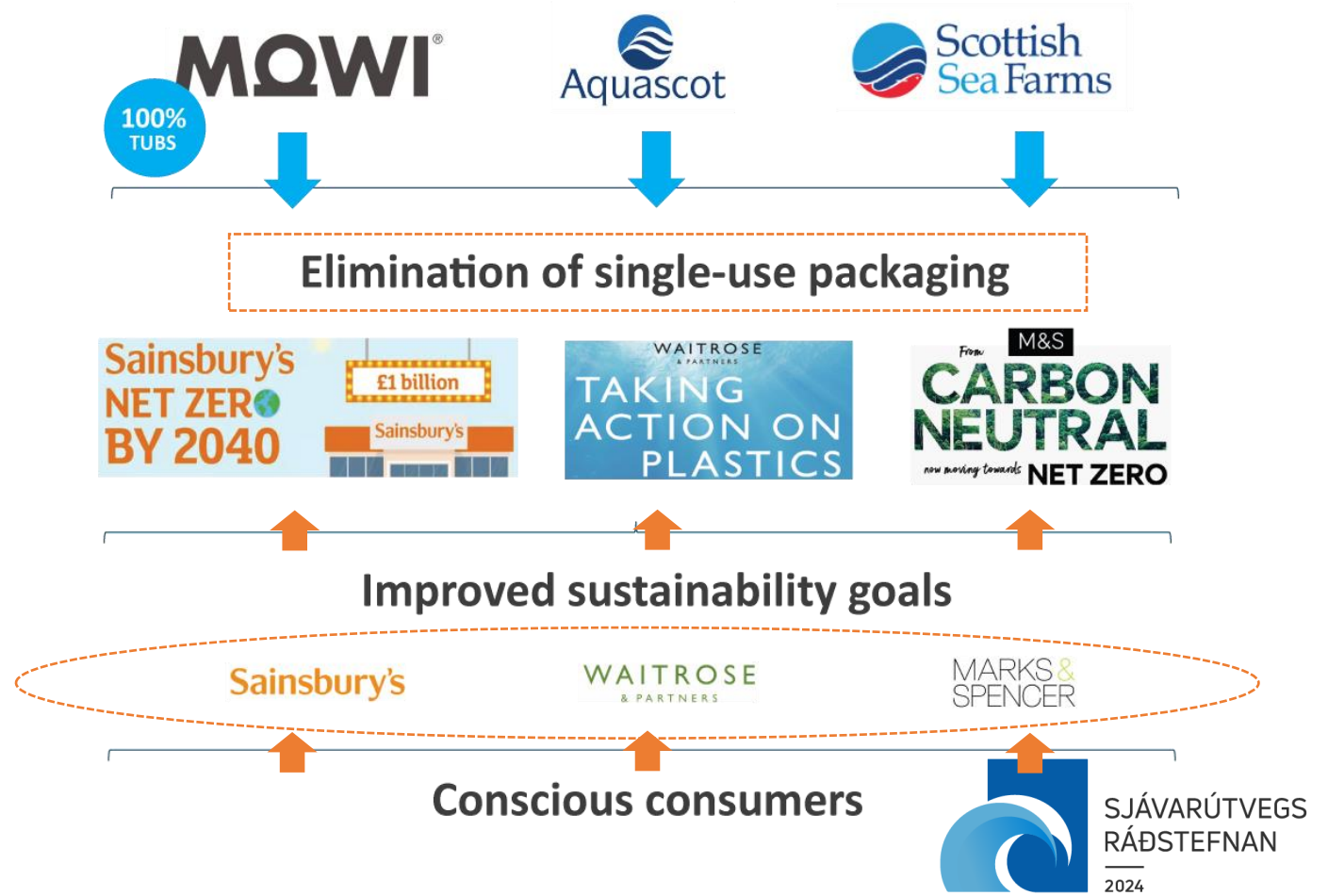


Skoska leiðin

Salmon value chain



Salmon producers provide multi-use tubs





MOWI[®]

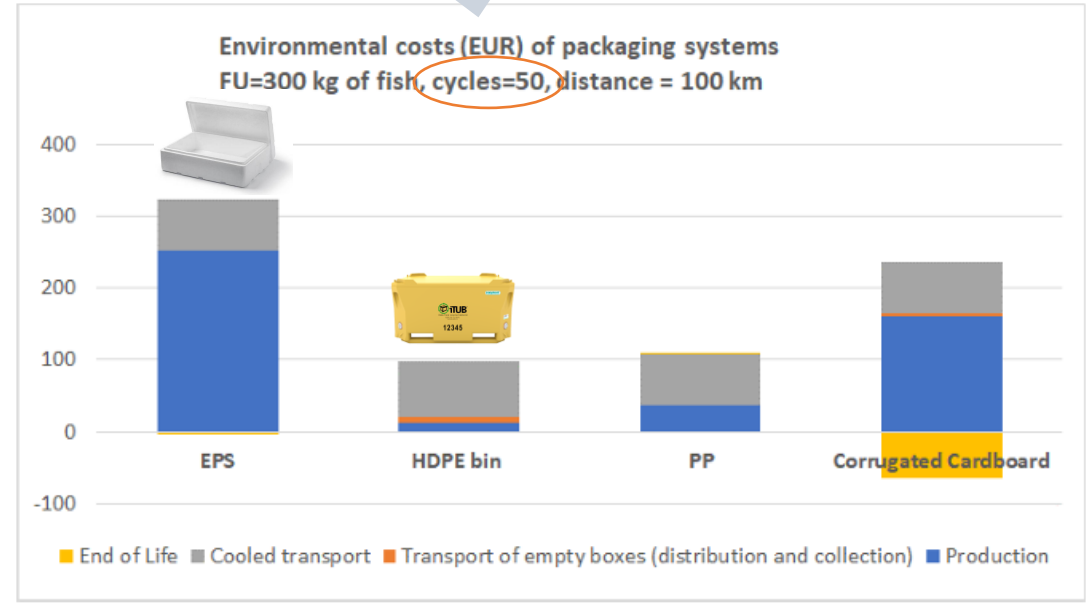
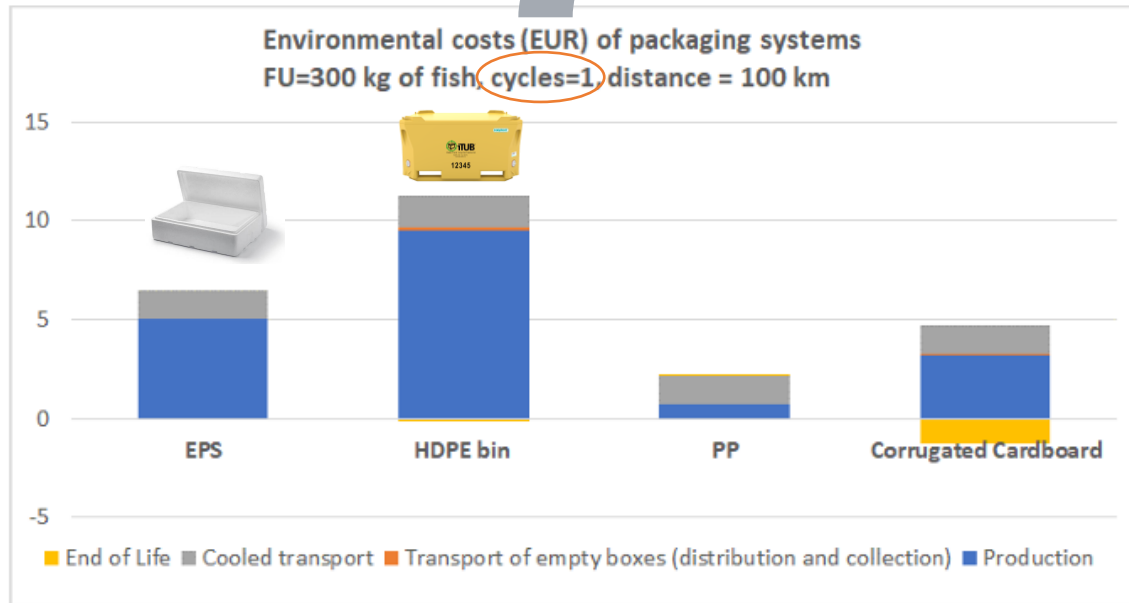
SCOTLAND







LCA - Lífsferilsgreining



320 EUR 99 EUR 110 EUR

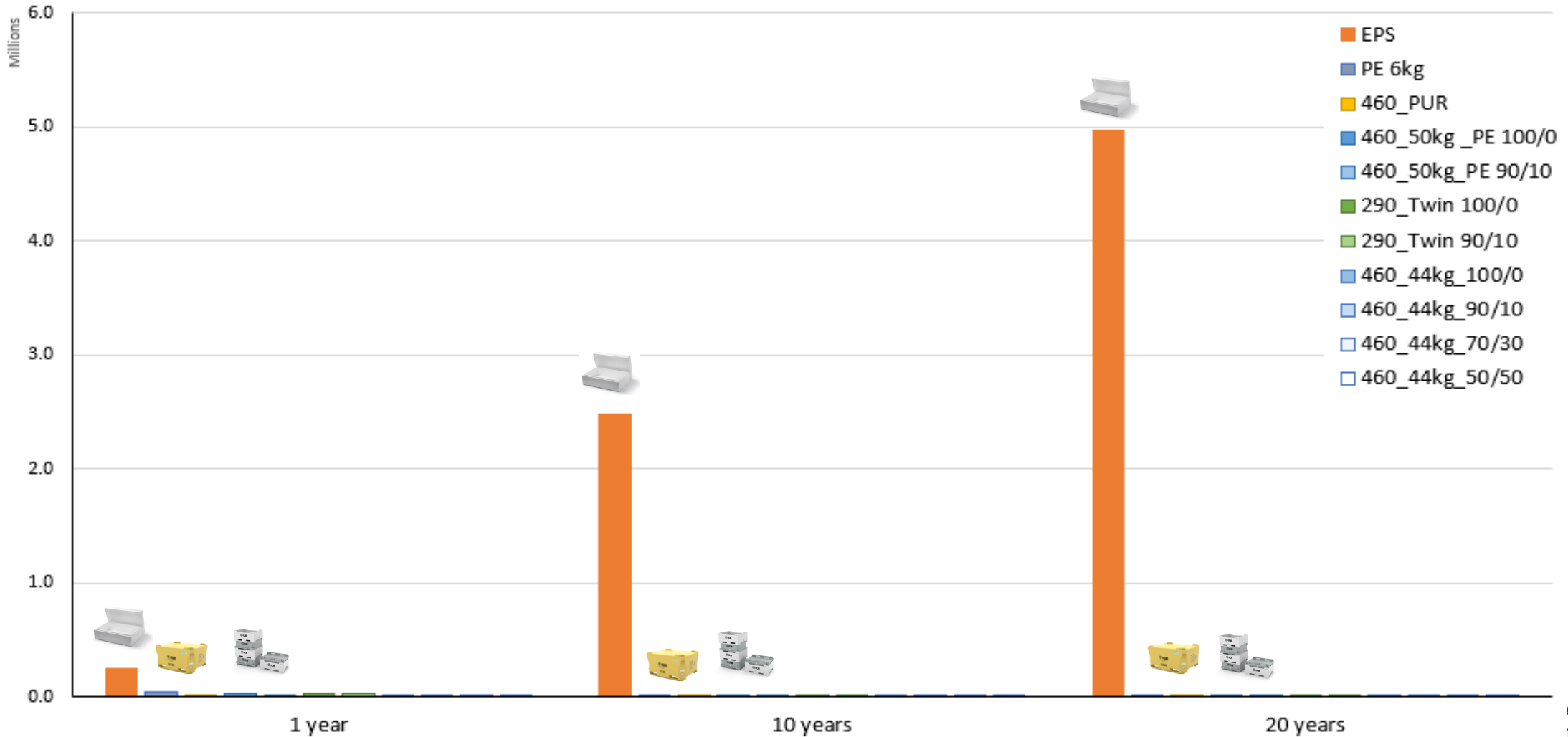
72%



2024

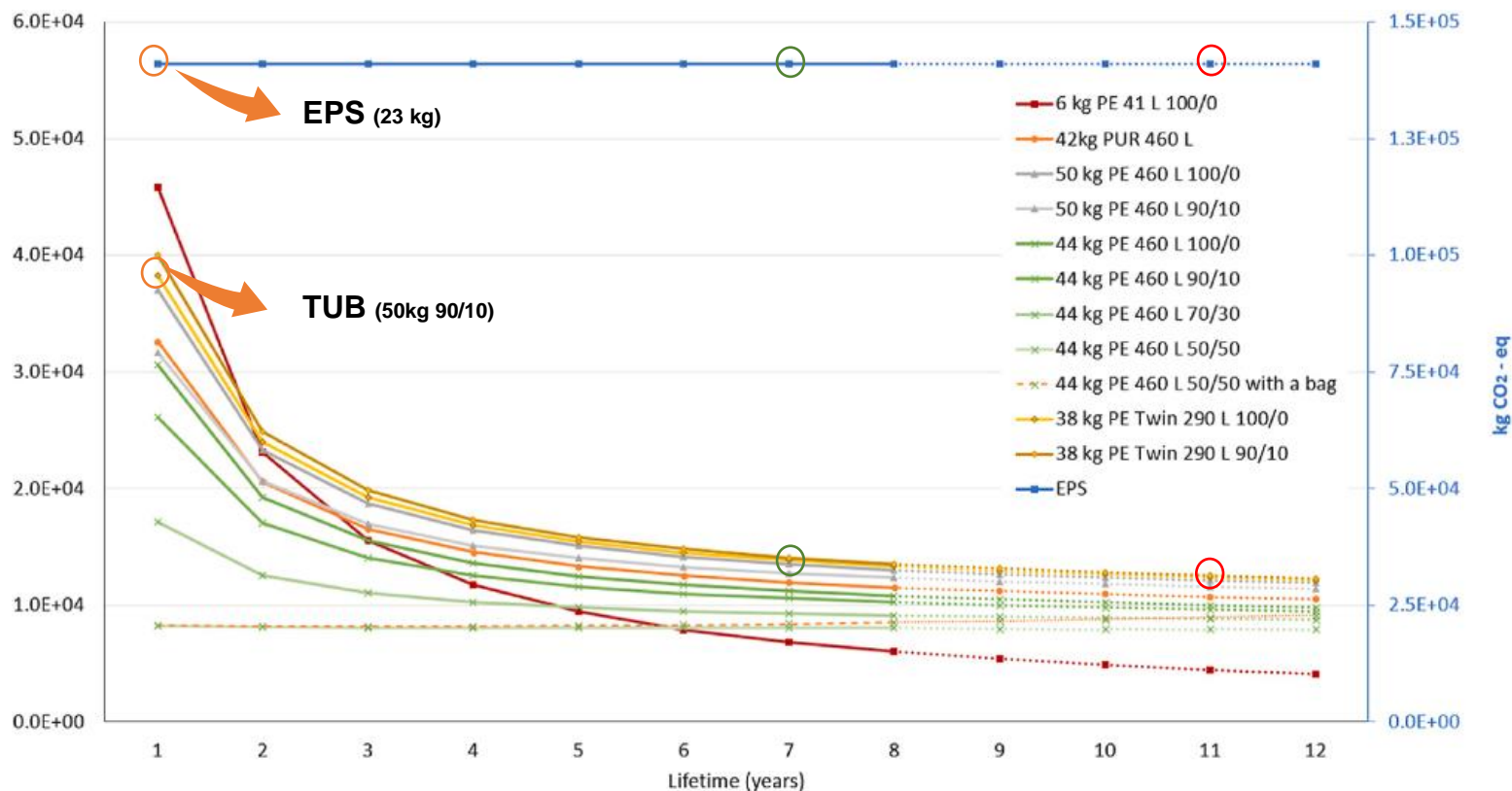
Global Warming Kg CO

1.000 tonn af fiski frá Íslandi til Evrópu



Umhverfiskostnaður

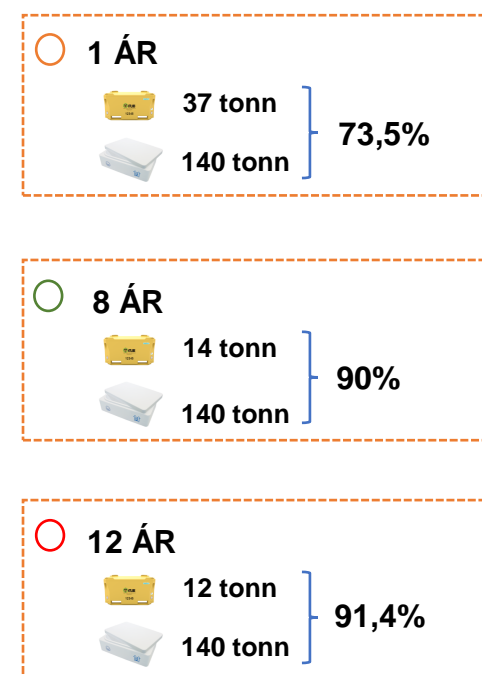
1.000 TONS OF HOG 2.000 KM
LOSUN - CO2 kg



Kolefnisjöfnun

67 EUR/TONN (1.10.24)

CO2 – Ker vs EPS





LERØY

Green Financing

Green Project financing

- In 2021, Lerøy launched their Green Finance Framework and issued its inaugural green bonds. The net proceed from the green bonds have since then been allocated to investments in sustainable post-smolt facilities with recirculating aquaculture systems and to sustainable processing facilities

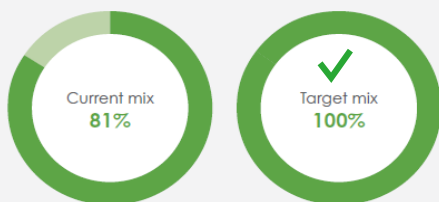


RAS post-smolt facility at Kjærelva

- Lerøy's post-smolt RAS facility in Kjærelva on the west-coast of Norway, is one of the world's largest of its kind. It has been designed to the highest standards, with a strong focus on biosecurity, fish logistics and footprint.
- Kjærelva produces 12 million smolt annually, divided into 6 million post-smolt and 6 million smolt. Production in 2021 was 3,505 tonnes of biomass. Since the plant was completed, it has delivered 38 million smolt. The facility consists of 12 sections with a total tank volume of 24,000 m³.
- The plant recovers energy from the wastewater where energy from water that has already been heated is reused before the wastewater is discharged. Additionally, the facility has 3,000 solar panels installed on the roof of the building, with an expected output of 1,200,000 million kWh.

Green Project	Invested amount* (NOKm)	Allocated net proceeds (NOKm)	Category	Debt issue (ISIN)	Type	Amount (NOKm)	Net proceeds (NOKm)	Issue date	Maturity date	Interest rate
Jasneåya (Mid-Norway)	761.1	761.1	Environmentally sustainable seafood product	NO0011097297	Green bond, snr unsecured	500.0	497.4	17.09.2021	17.09.2026	NIBOR 3m+ 1.00% p.a.
Kjærelva (West-Norway)	856.9	731.1	Environmentally sustainable seafood product	NO0011097305	Green bond, snr unsecured	500.0	497.4	17.09.2021	17.09.2027	NIBOR 3m+ 1.15% p.a.
				NO0011097339	Green bond, snr unsecured	500.0	497.4	17.09.2021	17.09.2031	3.35% p.a.
Total	1,598.0	1,492.2		TOTAL		1500.0	1,492.2			

Share of sustainable financing



Gæðafærlið



Bolungarvík - Iceland

Yerseke - Holland

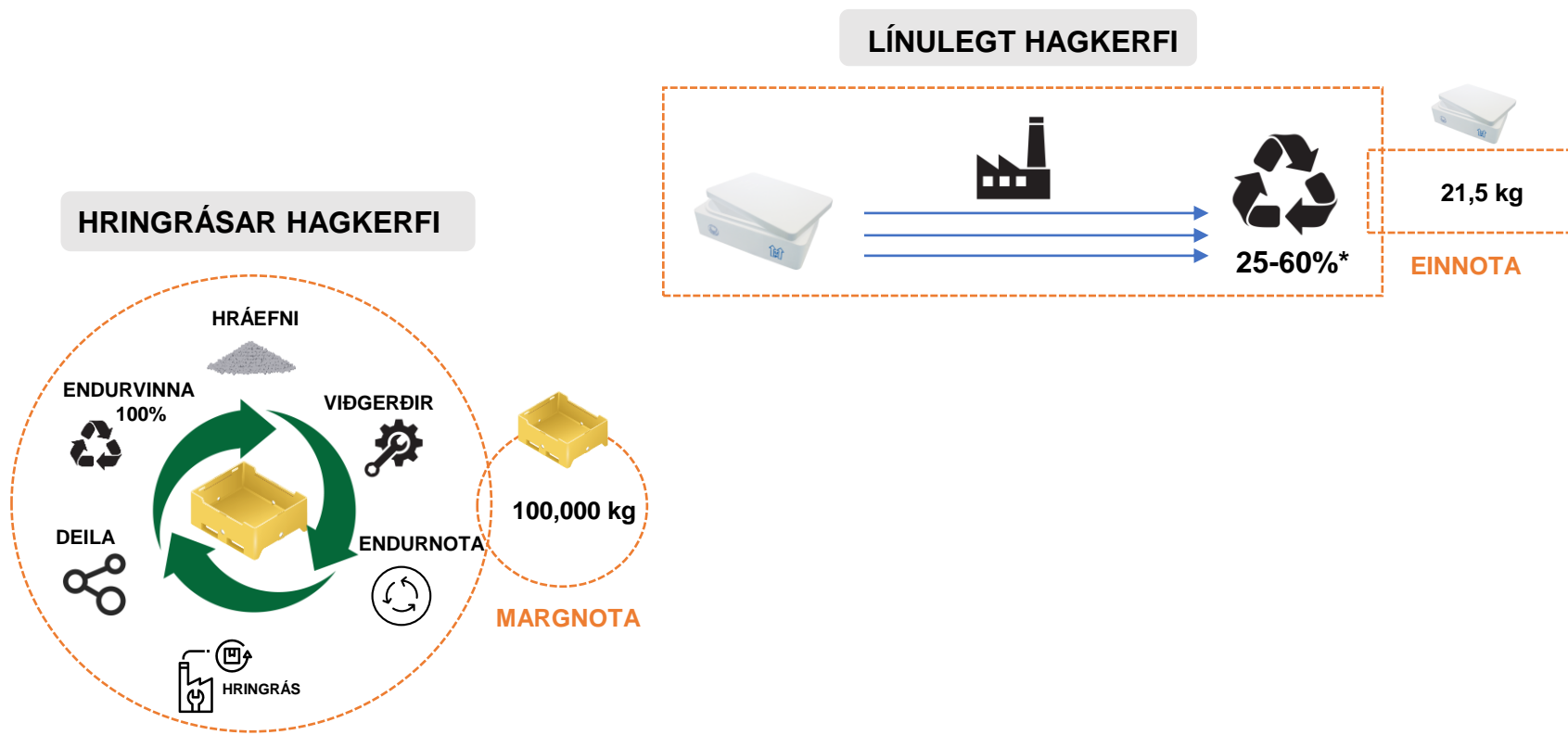


SJÁVARÚTVEGS
RÁÐSTEFNAN
2024

*Transport of fresh salmon from Arctic Fish to Adri&Zoon in EPS boxes and twin tubs – effect on temperature control, fish quality and yield. Björn Margeirsson August 2024.

Sjálfbærni = hagræðing

KOSTNAÐUR
EUR / KG



LOSUN
CO2 / PLASTNOTKUN



SJÁVARÚTVEGS
RÁÐSTEFNAN
2024

*<https://www.foam-expo-europe.com/new-eu-packaging-waste-regulation-nudges-eps-into-circular-supply-chains>

Sparnaður – umbúðir og flutningur



40 FT STD
18,2 TONS TUB
13,3 TONS EPS

25-50%

36%

80%

43,5%

40 FT PW
18,2 TONS TUB
15,6 TONS EPS

25-50%

16%

80%

28,1%

45 FT TRPW
18,2 TONS TUB
19,2 TONS EPS

25-50%

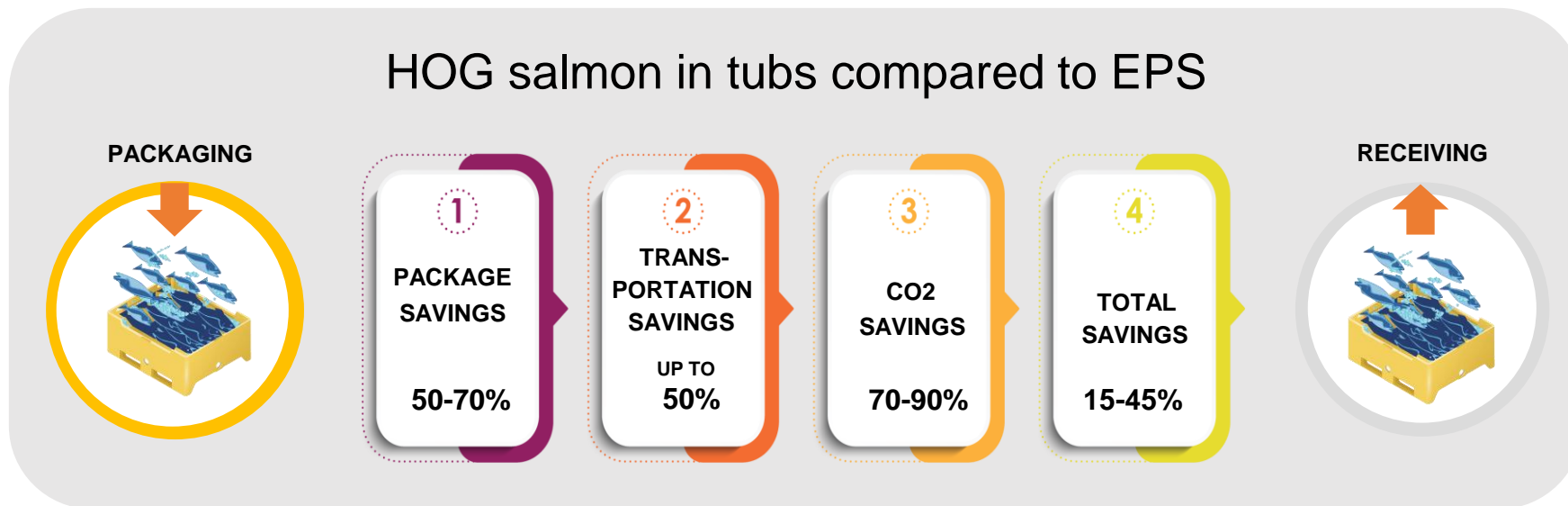
-5%

80%

11,7%



Max 29 tonn – strippaðir gámar / Eimskip



40 FT STD
20,0 TONS TUB
13,3 TONS EPS

70%

49,0%

80%

53,6%

40 FT PW
22,0 TONS TUB
15,6 TONS EPS

70%

40,4%

80%

46,9%

45 FT TRPW
23,2 TONS TUB
19,2 TONS EPS

70%

21,1%

80%

31,9%

MAX LOAD:
29 TONS FISH



Ker fyrir ofurkældan lax



Transport of fresh salmon from Arctic Fish to Adri&Zoon in EPS boxes and Twin Tubs (Aug 24)

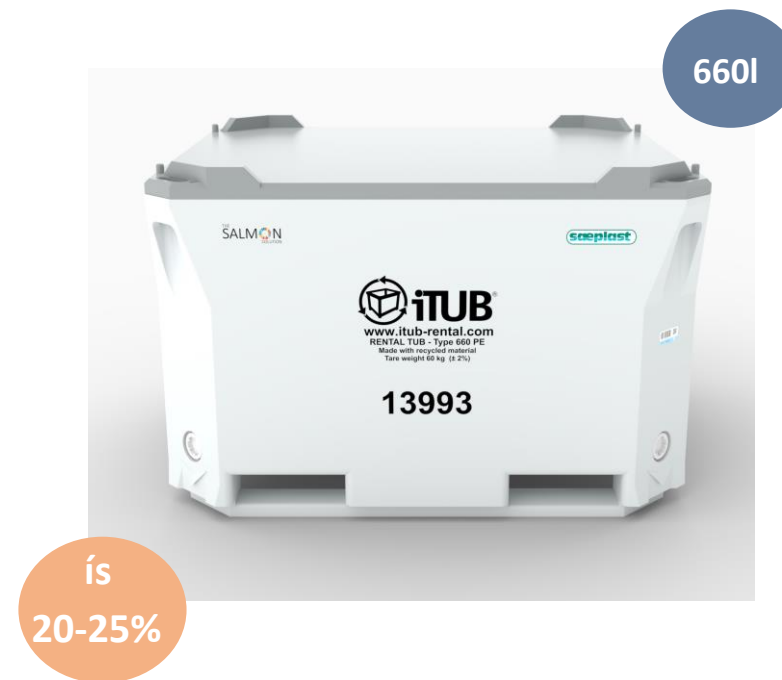
Effects of food container depth on the quality and yield of superchilled and iced Atlantic Fish (Feb 2020)

The effects of food container depth on the quality and yield of superchilled and iced Atlantic salmon (sept 18)

Skaginn 3X – Super chilled salmon – opportunity for Iceland

Sub-chilling of salmon (Matis Dec 15)

Ker fyrir slurry ís





Bragi Smith
Sales Director
Tel +354 895 2222
Email: bragi.smith@itub.is